



## R2C - YOUR SOFTWARE SOLUTION FOR INFORMATION SECURITY & DATA PROTECTION

### MAXIMUM SECURITY - SIMPLE AND EFFICIENT IMPLEMENTATION

With R2C, you get a powerful software solution that combines **information security**, **data protection**, and **BCM** in a single integrated system. Compliance with international standards such as ISO 27001 and NIS2 to the implementation of the EU GDPR and BSI 200-4 – our solution offers you everything you need for modern, certifiable management: intuitive, flexible, and secure.

# INFORMATION SECURITY

ISO 27001 / ISO 27019 / BSI or B3S



R2C provides you with a powerful information security management system (ISMS) that optimally protects your sensitive data and business processes. Our solution supports you in implementing international standards such as ISO 27001, offers comprehensive IT risk management, and enables audit-proof documentation—for maximum transparency and security.

## Certification made easy

R2C allows you to effortlessly meet international standards such as ISO 27001. Achieve a certification-ready organization and demonstrate your security expertise to customers and partners.

- Support for **ISO 27001, ISO 27019, the "IT-Grundschutzkatalog",** and other standards
- **A standards-independent** platform that **flexibly** integrates and manages requirements

## Quick risk assessment & targeted actions

Identify and evaluate risks in real time and **automatically** implement **appropriate protective actions** This allows you to efficiently minimize potential threats and maintain control at all times.

- **Automatic inheritance of protection requirements** with configurable direction
- Linking risks to **protective actions, assets, business processes, and incidents**

## Security that builds trust

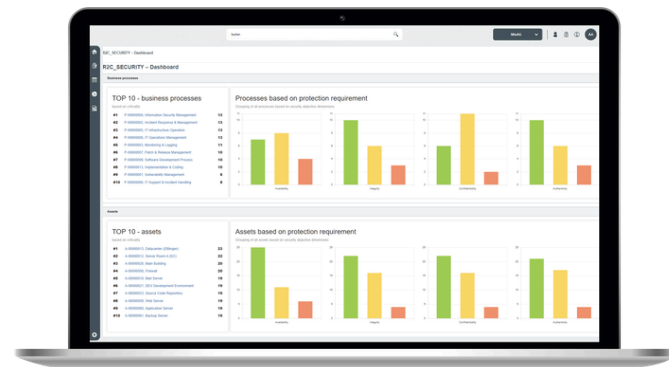
With **audit-proof documentation, detailed dashboards, and reports,** you can present yourself as trustworthy and professional both internally and externally.

- Informative reports and dashboards for **monitoring critical business processes**
- **Full-text search and filtering options** for efficient data utilization

In a world of growing cyber threats and increasing demands for data integrity, robust information security management is essential.

R2C helps you protect your sensitive data, build trust among your customers and partners, and meet the highest standards.

Information security is not only a competitive advantage but also a key prerequisite for sustainable business success



Feel free to contact us for more information or to schedule a demo!

[grc@schleupen.de](mailto:grc@schleupen.de)