



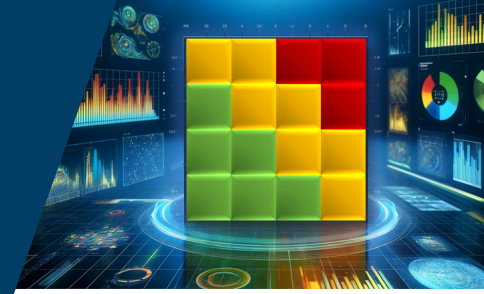
R2C – YOUR SOFTWARE SOLUTION FOR RISK MANAGEMENT

INTEGRATED APPROACH FOR MAXIMUM EFFICIENCY

The high scalability enables seamless adaptation to different degrees of maturity of your GRC processes. The comprehensive evaluation, analysis, and customization options help ensure easy compliance with legal requirements as well as national and international standards such as ISO 31000, COSO, ISO 37301, the EU Whistleblower Directive, and many more. Our best-practice approaches enable you to always stay ahead in the areas of governance, risk, and compliance.

RISK MANAGEMENT

ISO 31000 / IDW PS 340 (latest version) / COSO ERM



R2C provides comprehensive support for your risk management and enhances the efficiency of your risk management processes. Our flexible configuration options and in-depth analytical capabilities ensure that your company can effectively identify, analyze, and evaluate its risks—thereby providing a basis for informed decisions.

Customization

R2C offers maximum flexibility to meet your company's specific requirements.

- **Customizable risk categories & assessment models:** Customize your risk assessment by using different risk types to focus on topics such as CSRD, compliance, or projects.
- **Questionnaires:** Conduct internal and external questionnaires for double materiality analysis or supply chain assessment.
- **Customizable reporting templates:** Tailor your reports precisely to your needs.

Comprehensive risk analysis and assessment

These tools provide the means for a long-term assessment of your risk profile to strengthen your business:

- **Qualitative and quantitative assessment methods:** Detailed risk analyses tailored to the degree of maturity of your risk management system provide the basis for your actions.
- **Integrated opportunity management:** Identify risks and opportunities in a single step.
- **Monte Carlo simulation:** Get a precise calculation of Value at Risk (VaR) and Conditional Value at Risk (CVaR), while scenario analyses and heat maps provide a visual overview of potential risks and support decision-making.

Efficient management of actions

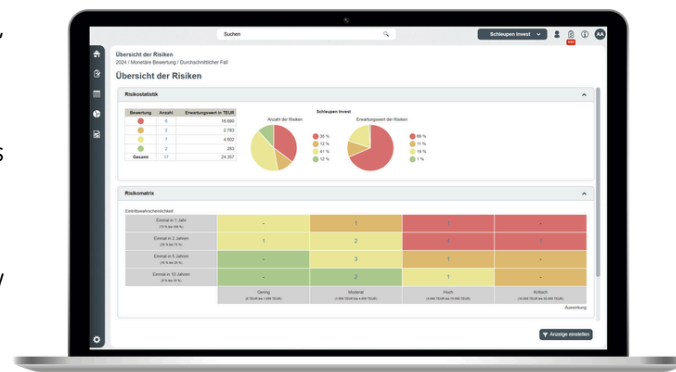
R2C enables consistent and efficient action management.

- **Automated email reminders:** Ensure that persons responsible implement actions on time, while evaluation of actions based on cost-benefit criteria helps maximize effectiveness.
- **Status tracking & audit-proof historization:** Stay informed about the current implementation status and document the effectiveness of all actions in a traceable and audit-proof manner.

In a world of growing cyber threats and increasing demands for data integrity, robust information security management is essential.

R2C helps you protect your sensitive data, build trust among your customers and partners, and meet the highest standards.

Information security is not only a competitive advantage but also a key prerequisite for sustainable business success.



Feel free to contact us for more information or to schedule a demo!

grc@schleupen.de